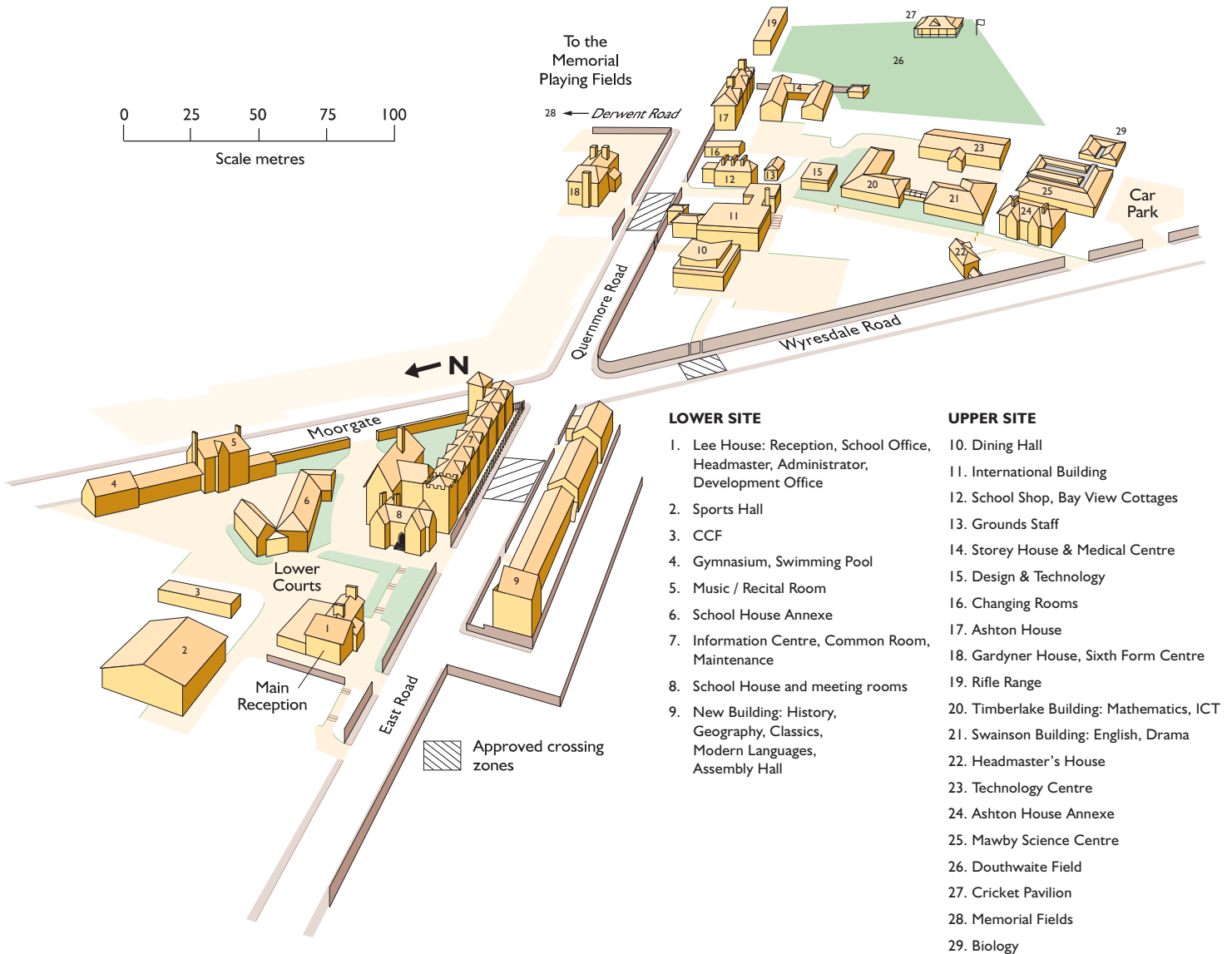




Lancaster Royal Grammar School

East Road, Lancaster LA1 3EF

Tel: 01524 580600 Fax: 01524 847947 Email: genoffice@lrgs.org.uk Web: www.lrgs.org.uk

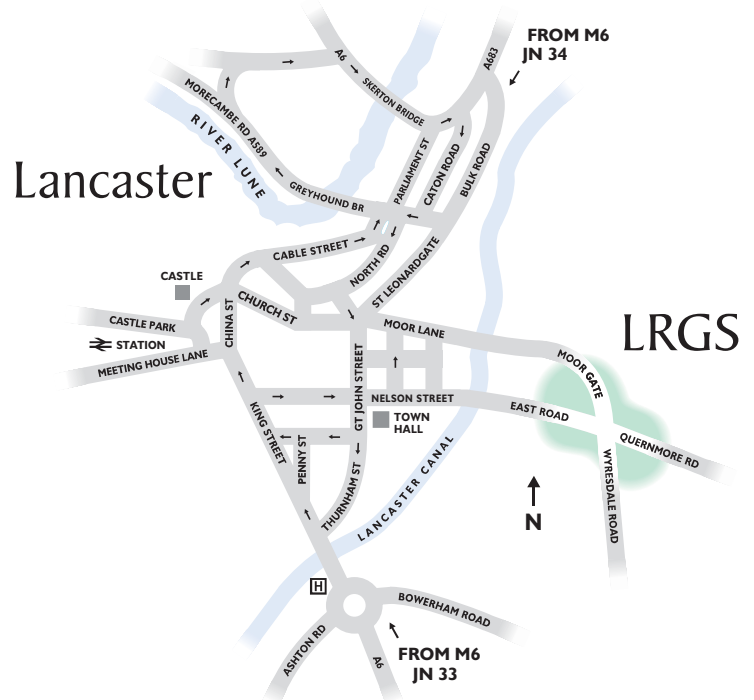


Motorway travellers from the south:

Leave M6 at J33. Travel 3.5 miles along the A6 north towards Lancaster to the next roundabout. Take the second exit and pass hospital on left. Enter one-way system at the lights in the right hand lane. Continue past KFC on the right. Turn right at the next pedestrian crossing, passing the market and M&S store on left. Go straight on through two sets of traffic lights, passing the Cathedral on the right. The School is approximately 500 yards further up the hill. Initial contact can be made at Lee House on the left.

Motorway travellers from the north:

Leave M6 at J34. Turn onto the A683 and travel towards Lancaster for 1.5 miles joining the one-way system at the traffic lights. Choose the left hand lane and continue for approximately half a mile. Filter left at Dalton Square (statue of Queen Victoria) signed Clitheroe. Go straight on through traffic lights, passing the Cathedral on the right. The School is approximately 500 yards further up the hill. Initial contact can be made at Lee House on the left.



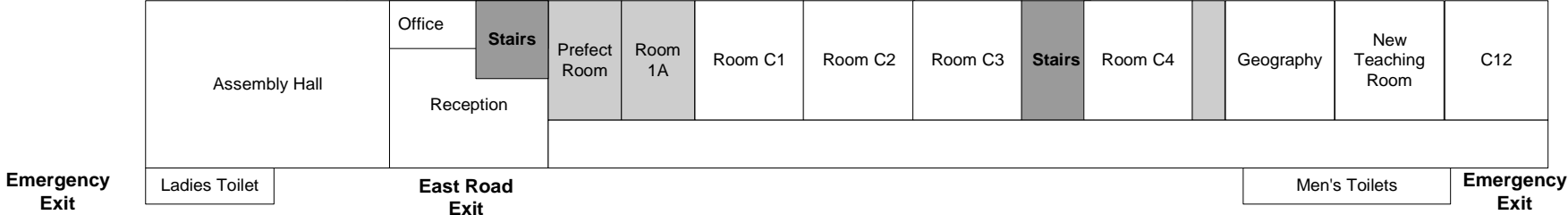
LANCASTER COMMUNITY MUSIC CENTRE

c/o 18 Lonsdale Place, Lancaster, LA1 4BX Tel:07866 289545 e-mail: lcmc_info@yahoo.co.uk
 Website: www.lcmt.org.uk

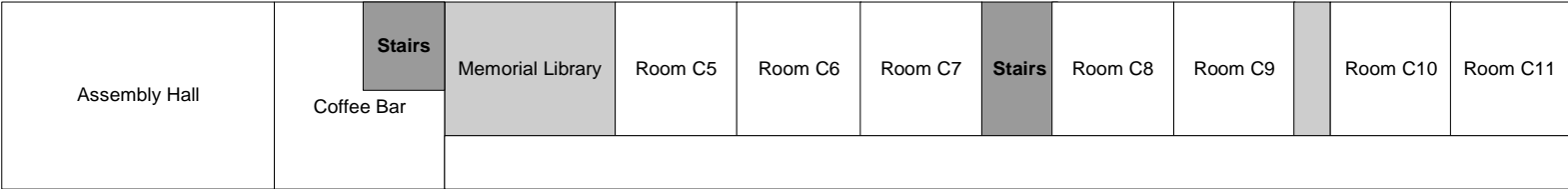


Emergency Exit

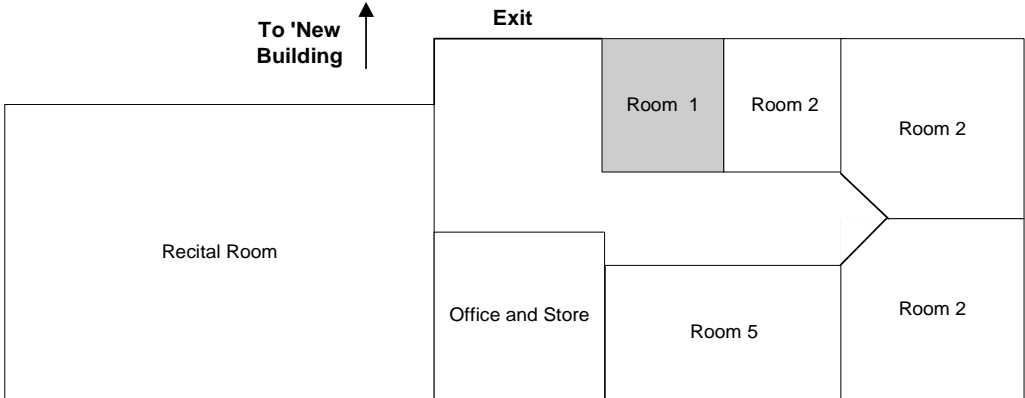
New Building Ground Floor




New Building First Floor



Music Block First Floor



 Out of bounds